



STUDENT BODY PROFILE

FALL 2004

Enrollment numbers include all students enrolled in on-campus courses, as well as those enrolled through MU Direct and the Center for Distance and Independent Study

ENROLLMENT AT THE UNIVERSITY OF MISSOURI-COLUMBIA*

	<u>Undergraduate</u>	<u>Professional</u>	<u>Graduate</u>	<u>Total</u>	<u>% of Total</u>
Arts & Science	7,798		1,040	8,838	32.7%
Business	3,669		312	3,981	14.7%
Agriculture, Food & Natural Res	1,499		297	1,796	6.7%
Education	1,216		1,393	2,609	9.7%
Engineering	1,792		402	2,194	8.1%
Natural Resources	453		113	566	2.1%
Health Professions	659		72	731	2.7%
Human Environmental Science	951		109	1,060	3.9%
Journalism	1,600		274	1,874	6.9%
Law		439	16	455	1.7%
Medicine		373	108	481	1.8%
Nursing	780		155	935	3.5%
Social Work	124		135	259	1.0%
Veterinary Medicine		257	45	302	1.1%
Non-Divisional	342			342	1.3%
**Graduate			580	580	2.1%
Total	20,883	1,069	5,051	27,003	100.0%

* Enrollment includes 1,021 students enrolled through MU Direct and 106 students enrolled through CDIS.

**Represents Public Affairs, Non-Degree Graduate and Students Enrolled in Interdisciplinary Graduate Programs ONLY.

Academic Indicators- Undergraduates

Curator Scholars	1,504
Bright Flight Scholars	2,527
Undergraduates Receiving Some Type of Academic Scholarship	6,047
National Merit Scholars	107
Mean UG ACT Composite	25.4

Classification of All Students by Class Level

Undergraduate		20,883
First Time College	4,668	
Freshmen (Incl. FTC)	5,855	
Sophomores	4,835	
Juniors	4,609	
Seniors	5,584	
Professional		1,069
Law	439	
Medicine	373	
Veterinary Medicine	257	
Graduate		5,051
Master	2,634	
Education Specialist	61	
Doctorate	1,943	
Non-Degree	413	
Total Student Body		27,003

Office of the Vice Provost
for Enrollment Management
228 Jesse Hall
October 1, 2004

The 15 Most Popular Undergraduate Degree Programs at MU

Rank	Department	#of Students
1	Journalism	1,600
2	Business Administration	1,029
3	Biological Sciences	1,024
4	Psychology	899
5	Secondary Education	515
6	Political Science	486
7	Mechanical Engineering	453
8	English	343
9	Elementary Education	336
10	Nursing	318
11	Animal Sciences	312
12	History	280
13	Hotel & Restaurant Mgmt	262
14	Biochemistry	250
15	Textile & Apparel Management	247

Top Degree Producing Undergraduate Programs at MU*

Rank	Department	#of Degrees
1	Business Administration	551
2	Journalism	364
3	Psychological Sciences	219
4	Biological Sciences	190
5	Interdisciplinary Studies	159
6	Nursing	134
	Political Science	134
8	English	126
9	Communication	107
10	Secondary Education	101
11	History	88
12	Mechanical Engineering	82
13	Accountancy	81
14	Hotel & Restaurant Management	69
15	Computer Science (Engr)	59
	Animal Science	59

*Degrees Awarded 2003-2004

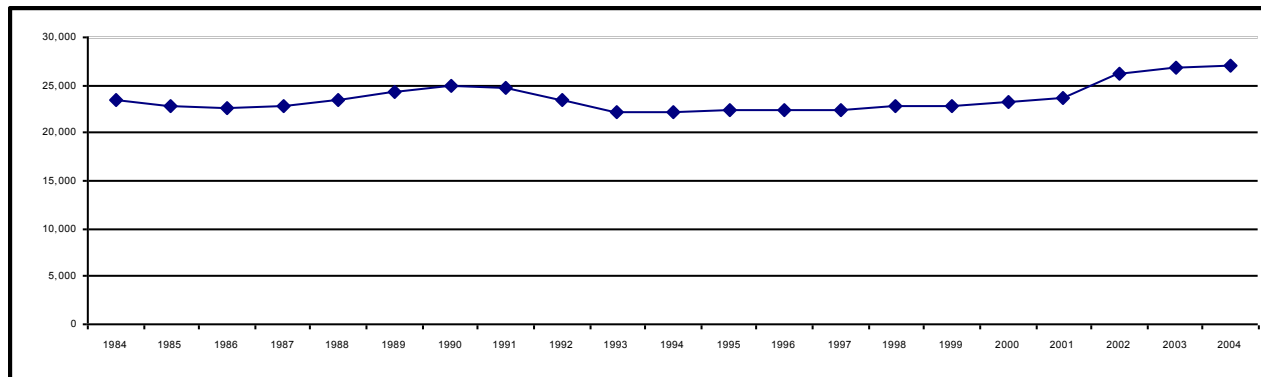
Gender By Classification

Classification	Female N	Female %	Male N	Male %
Undergraduate	10,761	52%	10,122	48%
Professional	555	52%	514	48%
Graduate	2,833	56%	2,218	44%

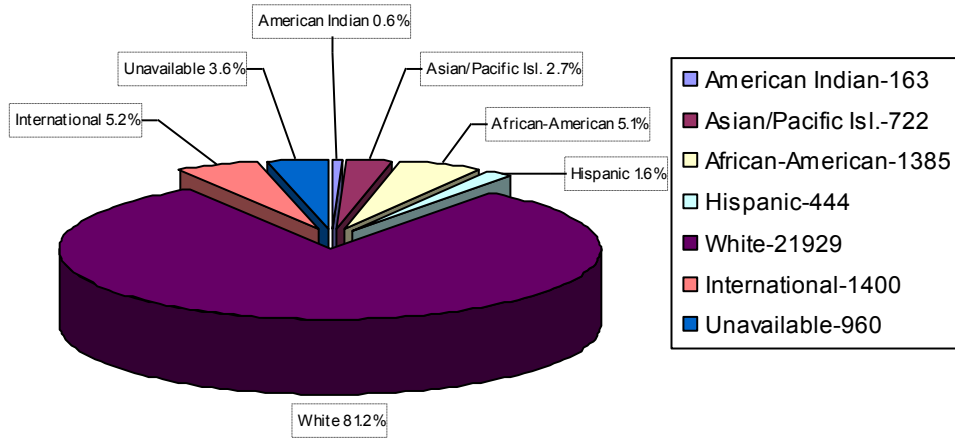
Undergraduate Student Enrollment by Course Load

Credits Taken	Number	Percentage
Under 12 Hours	1,350	6.5%
12-15 Hours	16,208	77.6%
16-18 Hours	3,209	15.3%
19 and More Hours	116	0.6%

Total Enrollment 1984-2004



Students By Ethnicity



Ethnic Enrollment 1994-2004

Ethnicity	1994	1999	2004
American Indian	.4%	.5%	.6%
Asian/Pacific Islander	2.2%	2.3%	2.7%
African-American	4.7%	6.0%	5.1%
Hispanic	1.3%	1.4%	1.6%

Age Distribution of the Student Body

Age	Undergraduate	Professional	Graduate	Total
17 & Under	0.6%	0.0%	0.0%	0.4%
18-24	94.3%	58.5%	25.0%	80.0%
25 & Above	5.0%	41.4%	74.9%	19.5%
Unknown	0.1%	0.1%	0.1%	0.1%

Geographic Origin of MU Students

Top Ten Feeder Counties		Top Ten Feeder States		Top Ten Feeder Countries	
1. St. Louis County	5,950	1. Missouri	21,025	1. United States	25,609
2. Boone	2,770	2. Illinois	1,481	2. China	298
3. Jackson	1,807	3. Texas	451	3. India	232
4. St. Charles	1,548	4. Kansas	395	4. Republic of Korea	209
5. Clay	607	5. California	193	5. Taiwan	100
6. Cole	571	6. Nebraska	192	6. Thailand	63
7. Greene	567	7. Iowa	164	7. Canada	37
8. Jefferson	383	8. Minnesota	143	8. Japan	36
9. Platte	334	9. Colorado	120	9. Malaysia	27
10. Franklin	328	10. Ohio	120	10. Romania	21

One-Year Retention Rates of First-Time College Students

Fall FTC Class	Retention Rate
1997	84.3%
1998	82.7%
1999	82.2%
2000	84.5%
2001	83.7%
2002	84.2%
2003	84.8%

Graduation Rates of First-Time College Students

FTC Year	4 Year	5 Year	6 Year
1994	29.2%	55.3%	60.0%
1995	31.8%	59.5%	64.7%
1996	34.7%	60.4%	65.2%
1997	36.7%	63.0%	66.5%
1998	37.5%	64.1%	67.8%
1999	37.6%	62.5%	NA
2000	39.6%	NA	NA

Residential Choices of Undergraduate Students

